

# 高雄國際機場

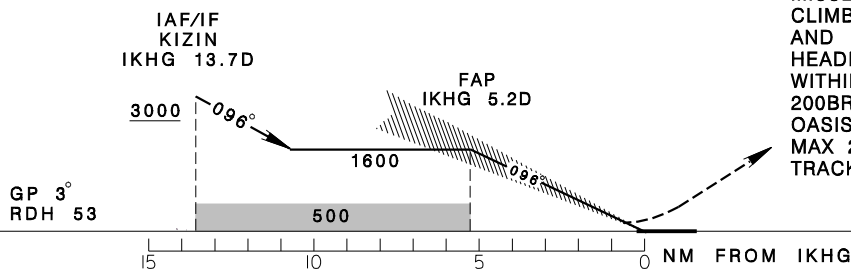
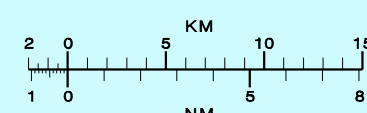
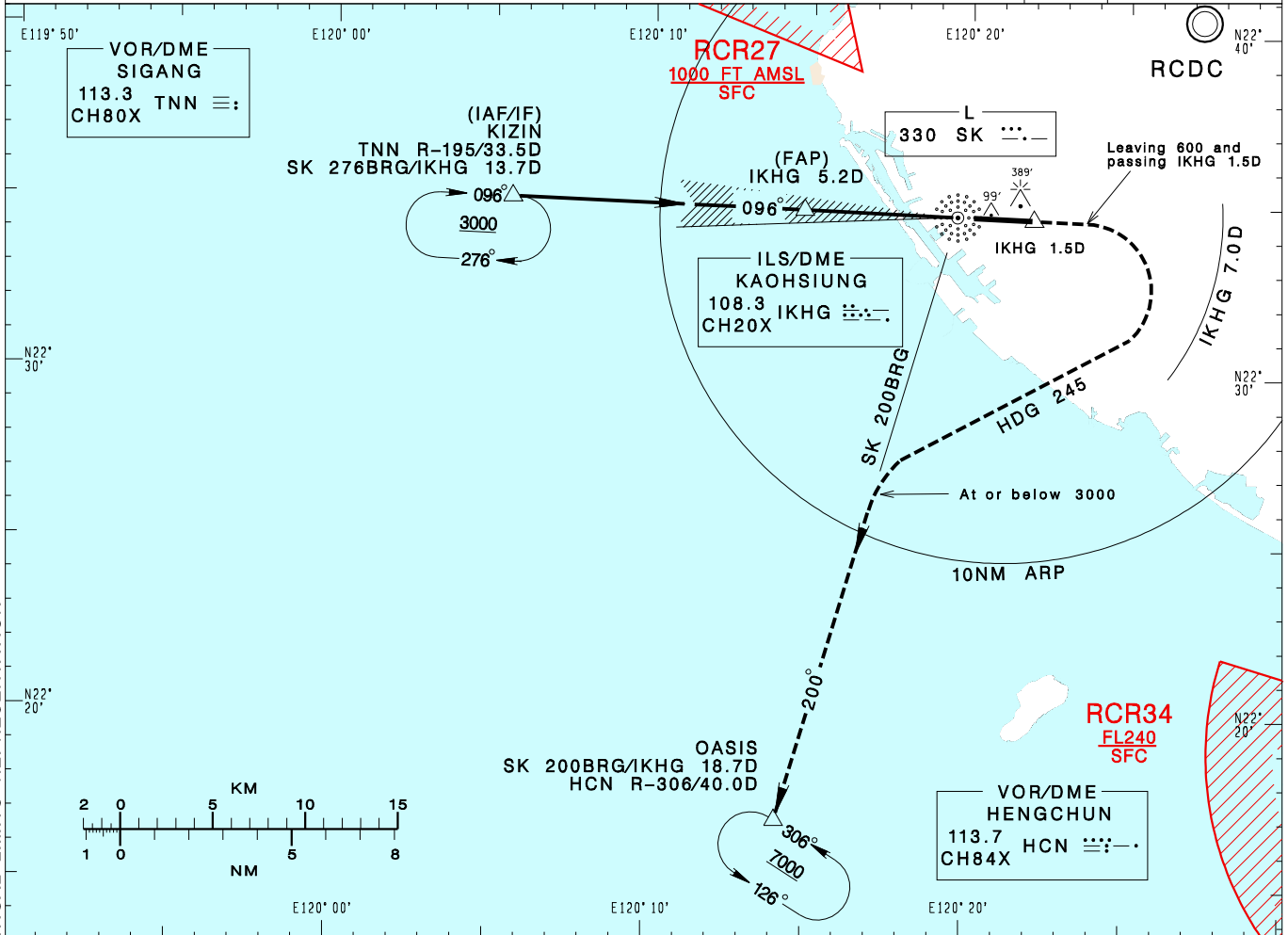
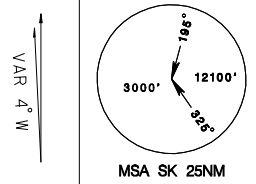
## KAOHSIUNG INTL AD

RCKH  
ILS RWY09

KAOHSIUNG APP 124.7 125.7	KAOHSIUNG TWR 118.7 120.7	ATIS 127.8
------------------------------	------------------------------	---------------

Apt Elev: 32' Rwy09 DTBR Elev: 21' Trans Level: FL130 Trans Alt: 11,000'

BEARINGS ARE MAGNETIC; DISTANCES ARE NAUTICAL MILES; ELEVATIONS, HEIGHTS IN FEET



**MISSED APCH:**  
CLIMB ON SK 096BRG UNTIL LEAVING 600 AND PASSING IKHG 1.5D, THEN TURN RIGHT HEADING 245, COMPLETING THE TURN WITHIN 7.0D FROM IKHG, TO INTERCEPT SK 200BRG AT OR BELOW 3000. PROCEED TO OASIS, CLIMB TO 7000 AND HOLD. MAX 210KT IAS UNTIL ESTABLISHED ON TRACK TO OASIS.

MINIMA (OCA IN FT, VIS IN M, OCH IN FT)

CATEGORY		A	B	C	D
STRAIGHT IN	MA minima climb gradient 4.0% (244ft/NM)	231/800 RVR550 210	243/800 RVR550 222	251/800 RVR550 230	261/800 RVR550 240
	MA minima climb gradient 2.5% (152ft/NM)	325/800 RVR750 304	337/800 RVR750 316	345/800 RVR800 324	356/800 RVR800 335
STRAIGHT IN (TDZ/CL LGT OUT)	MA minima climb gradient 4.0% (244ft/NM)	231/800 RVR750 210	243/800 RVR750 222	251/800 RVR750 230	261/800 RVR750 240
	MA minima climb gradient 2.5% (152ft/NM)	325/800 RVR750 304	337/800 RVR750 316	345/800 RVR800 324	356/800 RVR800 335
STRAIGHT IN (ALS OUT)	MA minima climb gradient 4.0% (244ft/NM)	231/1200 RVR1200 210	243/1200 RVR1200 222	251/1200 RVR1200 230	261/1200 RVR1200 240
	MA minima climb gradient 2.5% (152ft/NM)	325/1400 RVR1400 304	337/1400 RVR1400 316	345/1500 RVR1500 324	356/1500 RVR1500 335
CIRCLING		630/1900 598	840/2800 808	1080/3700 1048	1080/4600 1048

**NOTE**  
1. CIRCLING NOT AUTHORIZED NORTH OF RWY.  
2. ATS SURVEILLANCE REQUIRED.

\*DME REQUIRED.

CHANGES: NEW PAGE NUMBER, UPDATE RESTRICTED AREA VERTICAL LIMITS REPRESENTATION